

## The Challenges Along the Way

*The original building design offered very little space between floors, which posed the greatest challenge for installers during the project. Due to good project management by Hawkins Construction this problem was overcome.*

## Conclusion

*The large scale of this project allowed Schneider Electric New Zealand to demonstrate the capability of the Clipsal brands extensive product range for future commercial developments.*

*In conclusion the project was a complete success, meeting all deadlines and providing the client with a seamless data and electrical solution for the newly located, innovative Grace Hospital.*

## Grace Hospital NZ

### Case Study



[clipsal.co.nz](http://clipsal.co.nz)



**Schneider**  
Electric



Clipsal Electrical Products are available through electrical wholesalers New Zealand wide.

Clipsal Electrical Products are designed to ISO 9001 and ISO 9002.

**Schneider Electric (NZ) Limited**  
14 Charann Place, Avondale, Auckland 1026  
PO Box 15355 New Lynn, Waitakere 0640  
Telephone (09) 829 0490  
Facsimile (09) 829 0491  
Website: [www.schneider-electric.co.nz](http://www.schneider-electric.co.nz)

**Clipsal Customer Care**  
Freephone 0508 254 7725  
Freefax 0508 250 305  
Email [sales@clipsal.co.nz](mailto:sales@clipsal.co.nz)  
Website [www.clipsal.co.nz](http://www.clipsal.co.nz)

You can find this brochure and many others online in PDF format at: [clipsal.co.nz](http://clipsal.co.nz)

Follow the links on the home page or access the following page directly: [clipsal.co.nz/brochures](http://clipsal.co.nz/brochures)

**clipsal.co.nz**

Schneider Electric (NZ) Ltd reserves the right to change specifications, modify designs and discontinue items without incurring obligation and whilst every effort is made to ensure that descriptions, specifications and other information in this catalogue are correct, no warranty is given in respect thereof and the company shall not be liable for any error therein.

© Clipsal Australia Pty Ltd.  
This material is copyright under Australian and international laws. Except as permitted under the relevant law, no part of this work may be reproduced by any process without prior written permission of and acknowledgement to Schneider Electric (NZ) Ltd.

CP-008

## Setting New Standards in NZ Hospitals

The Grace Hospital in New Zealand is a new purpose built facility comprising six operating theatres, a procedure room, HDU, large stay unit and 48 inpatient beds. The hospital is located on spacious grounds south of Tauranga and offers modern patient rooms equipped with all the facilities necessary to make patients experience as comfortable as possible.

It was opened in late 2007 and developed by Norfolk Southern Cross – a joint venture between over 30 surgeons and anaesthetists and Southern Cross Hospitals. The high standard of patient facilities is why Schneider Electric (NZ) Ltd (previously Clipsal Industries (NZ) Ltd) was recommended as the supplier for electrical fittings and data equipment throughout the hospital.

During 2006 Schneider Electric NZ was contracted to supply the Grace Hospital with some of their industry leading specialised data and medical electrical equipment.

The Sales Representative for the project was Kerry Ross from Schneider Electric NZ and Guild & Spence was the chosen electrical contractor. Under the management of Graeme Clarke, G & S Technologies a division of Guild & Spence was responsible for the installation of data and nurse call equipment.

The data and electrical component of the entire project took approximately 18 months to install at a total cost of \$200,000. This was one of Schneider Electric New Zealand's largest supply contracts for the Clipsal brand, and has brought Grace Hospital to the forefront in medical services for hospitals in New Zealand.

Besides hospital relocation, the primary objective of the project was to create continuity of all electrical equipment throughout the hospital. Schneider Electric's extensive range of Clipsal electrical products enabled Grace Hospital to achieve this continuity, and is the only company in New Zealand that can offer this type of compatibility.

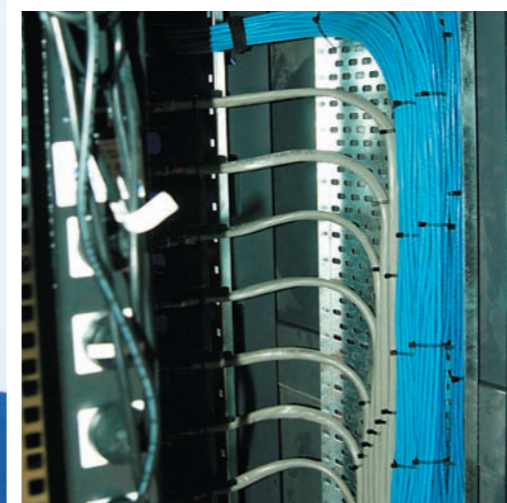
Continuity of Clipsal branded electrical fittings throughout the hospital not only improved aesthetics of the building, but will also make ongoing maintenance much easier, with all products coming from one supplier.



The core Clipsal branded products used on this project was Clipsal Datacomms Titanium Voice and Data Equipment, Clipsal 2000 Series Power Outlets and Clipsal's Medilec Range of specialised medical equipment.

The specifics of the installation comprised of:

- 4 x 45U Clipsal Titanium Data Cabinets supporting 900 x Cat.6 Data Outlets
- 1000 x 2000 Series Socket Outlets and Switches
- 850 x Clipsal Medilec 10mA RCD's and Medilec Socket Outlets
- 13 x Clipsal three phase 10mA RCD Switchboards.



## How Clipsal Makes the Grace

The extensive Clipsal Titanium Data installation at the Grace Hospital vastly improved data services, offering great versatility for data and communication outlets in every room throughout the hospital. Hospital IT Technicians also commented on how user friendly and efficient the Clipsal Titanium product was to use, again demonstrating why the Clipsal Titanium Series of data products is an award winning range.

Schneider Electric's extensive range of Clipsal Medilec Electrical Equipment has been developed to meet the special needs of hospital patient treatment areas.

The new generation of Clipsal Medilec Electrical accessories are designed to blend into the hospital's surroundings, creating a more relaxed environment for both patients and medical staff.

Clipsal's Medilec electrical accessories range is based around incorporating the common modular size of Clipsal Medilec ML2000 and Clipsal 2000 Series Accessories, along with a variety of products that other manufacturers develop using the Clipsal 2000 Series platform. This unique feature allows Clipsal Medilec to be quickly and easily customised to suit the customer's specific requirements.

G & S Technologies (a division of Guild and Spence Electrical) was the ideal company to carry out the installation because we're a 'one-stop-shop' for electrical products and installation technicians,' says Graeme Clarke from G & S Technologies.

G & S Technologies also supplied and installed additional products such as television RF equipment, data security access control and nurse call equipment.

